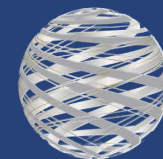




Environmental Social Governance

REPORT 2024



MINAURUM SILVER INC

Forward Looking Statement

Information Contained in this Presentation

This presentation (the “**Presentation**”) is a summary description of Minaurum Gold Inc. (“**Minaurum**” or the “**Company**”) and its business and does not purport to be complete. This presentation is not, and in no circumstances is it to be construed as, a prospectus, an advertisement, or a public offering of securities. No securities regulatory authority or similar authority has reviewed or in any way passed upon the document or the merits of the Company’s securities and any representation to the contrary is an offence.

Except where otherwise indicated, the information contained in this Presentation has been prepared by Minaurum and there is no representation or warranty by Minaurum or any other person as to the accuracy or completeness of the information set forth herein. Except as otherwise stated, information included in this Presentation is given as of the date hereof. The delivery of this Presentation shall not imply that the information herein is correct as of any date after the date hereof.

The footnotes, endnotes and appendices to this presentation contain important information. The endnotes and appendices are found at the end of the presentation.

Cautionary Note Regarding Forward-Looking Information

This Presentation includes “forward-looking statements” and “forward-looking information” within the meaning of Canadian securities legislation. All statements included in this Presentation, other than statements of historical fact, are forward-looking statements. When used in this presentation, words such as “may”, “would”, “could”, “will”, “intend”, “expect”, “believe”, “plan”, “anticipate”, “estimate”, “scheduled”, “forecast”, “predict”, “foresee” and other similar terminology, or sentences/statements that certain actions, events or results “may”, “could”, “would”, “might” or “will” be taken, occur or be achieved are intended to identify forward-looking statements, which, by their very nature, are not guarantees of the Company’s future operational or financial performance. These statements reflect the Company’s current expectations regarding future events, performance and results, and are accurate only at the time of this Presentation and may be superseded by more current information.

Forward-looking statements also involve known and unknown risks, uncertainties and other factors, which may cause the actual results, performance or achievements of the Company or its mineral projects to be materially different from any future results, performance or achievements expressed or implied by such forward-looking statements or information.

Although the forward-looking statements or information contained in this Presentation are based upon what management of the Company believes are reasonable assumptions, the Company cannot assure investors that actual results will be consistent with these forward-looking statements. They should not be read as guarantees of future performance or results. A number of factors could cause actual results to differ materially from the results discussed in the forward-looking statements, including, but not limited to: unanticipated changes in general business and economic conditions or conditions in the financial markets; fluctuations in the price of metals; stock market volatility; the availability of exploration capital and financing generally; changes in national and local government legislation; changes to taxation; changes in interest or currency exchange rates; loss of key personnel; inaccurate geological assumptions; legal disputes or unanticipated outcomes of legal proceedings; social unrest; competition; unavailability of materials and equipment; government action or delays in the receipt of permits or government approvals; community member disturbances; industrial disturbances or other job action; and unanticipated events related to health, safety and environmental matters, including the impact of epidemics and any escalation in the severity of the COVID-19 pandemic. Forward-looking information is designed to help readers understand management’s current views of the Company’s near and longer-term prospects, and it may not be appropriate for other purposes. The Company will not update any forward-looking statements or forward-looking information unless required to by applicable securities laws. The forward-looking statements contained herein are based on information available and are made as of the date hereof.

Aligning with Global Leading ESG Frameworks

ENVIRONMENT

Minaurum conducts its exploration programs using industry-leading environmental standards that exceed local and international requirements. Minaurum

- Consults and communicates transparently with local communities, regulatory and governmental authorities and other stakeholders relating to environmental management practices
- Protects and minimizes water use, recycles, and reuses water
- Committed to efficient use of resources and minimizing wastage
- Reviews and improve environmental management practices and performance
- Minimizes its environmental footprint



SOCIAL

Minaurum provides employment, procures supplies locally and offers training/educational opportunities to elevate the standard of living within the communities it operates in. Minaurum:

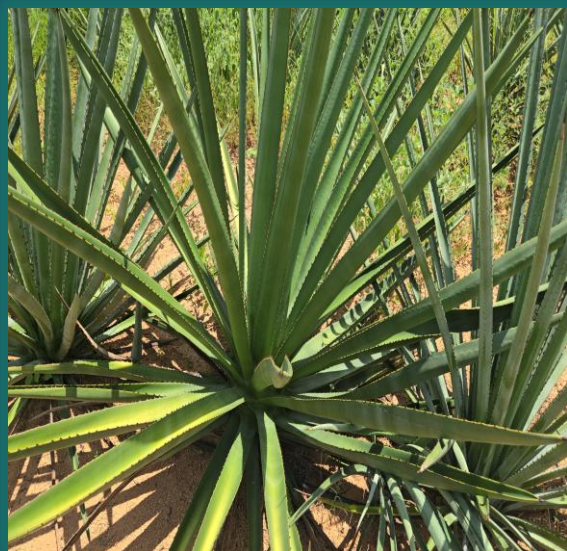
- Promote training to promote education and opportunities to its workers
- Assists in creating sustainable economic growth via providing ongoing local employment
- Actively advances infrastructure development for the local community
- Ensures that its exploration efforts operate with strict safety and health protocols to promote a healthy and sustainable community
- Respects local communities we operate in

GOVERNANCE

Minaurum encourages high standards of conduct and communication between its local representatives and stakeholders, including contractors and local communities.

Long Term Investment Into Communities

Contributed **\$1.7M** in funding social, environmental, and governance initiatives¹



Planted over 8 hectares of bacanora agave plantations, and greenhouse for community plant nursery



Local employment is an integral part of our exploration programs



Ongoing constructive engagement with stakeholders at our projects

¹Funds jointly contributed with Alamos project Optionor during period 2017-2024 calendar years. Minaurum contributed \$1,228,124; Optionor \$484,909.



Environment

Nursery Plantation



The nursery plantation continues to grow fruit, ornamental, medicinal plants and seeds. Plants grown in nursery are used for reforestation purposes

The community garden continues to grow as well

[Please for YouTube Video](#)

Providing Safe and Clean Drinking Water

Due to the need for water for human use and consumption a water well rig sponsored by Minaurum and drilled in the communities of La Aduana and Tetajiosa

Other activities included regular sampling and analysis of underground water (water from tunnels, shafts, and wells near the project), as well as surface water (water from local reservoir and the springs) for safe use of local water resources

[Please for YouTube Video](#)



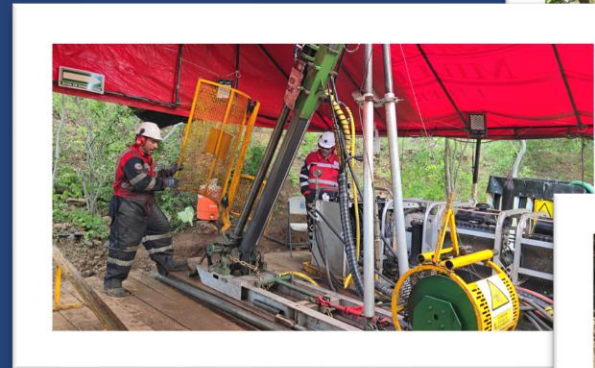
Minimal Environmental Impact Exploration

Actively employ man-portable modular drill rigs that significantly reduce the environmental footprint of exploration

Drill occupies a maximum 4 m by 4 m space

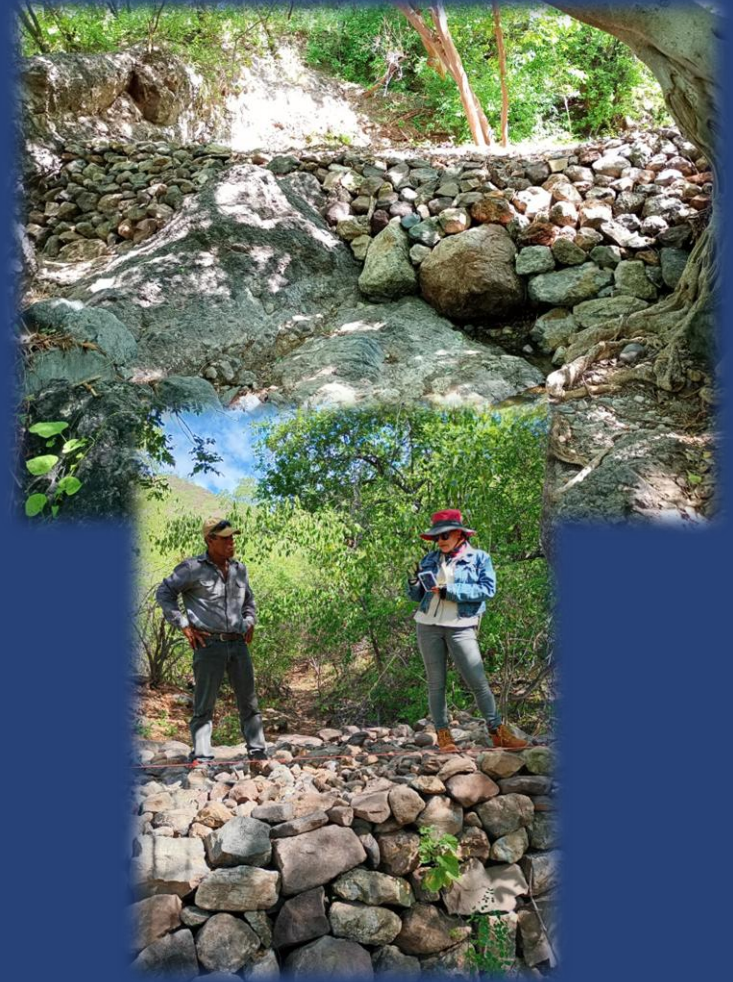
No need to cut down trees or damage local flora as the drills can be positioned around them

[Click for YouTube Video](#)



Environmental Preservation

Fencing of the border between the communities, cleaning of firebreaks, creation of stone trenches to retain moisture and soil with funds obtained from the governmental agency CONAFOR (National Forestry Commission)





Social

Communal Holidays and Celebrations

Minaurum continued its annual support for local customs by contributing gifts to celebrations including: Mothers Day, Fathers Day, Childrens Day, Miners Day, Three Kings Day, Policemen Day, Day of the Holy Cross, and Christmas. Celebrations encourage solidarity and togetherness in the community.



Education

Provided schools with supplies including chairs, desks, books and most importantly scholarships

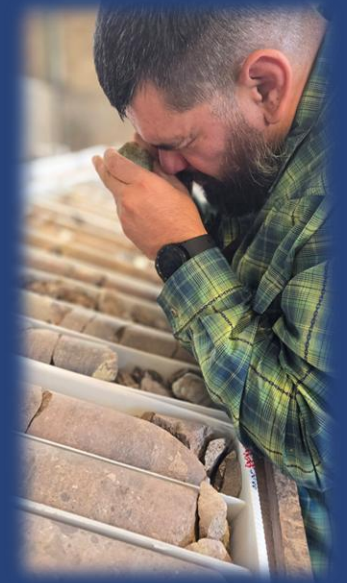
[Click for YouTube Video](#)



Local Employment

Minaurum continues to support local hiring of geologists, prospectors, students and other workers in helping the community to grow, improve skill sets, generate income, and train and educate a local mining work force.

[Click for YouTube Video](#)



Socially Integrated Community

Microloan Program. In 2018, developed and funded a Micro-loan program with \$25,000 which has now grown to 170 loans totaling \$100,000 and continues to grow. The loan committee is constituted by members of the Union of Workers of the General Industry and Commerce of Sonora State. The program provides immediate financial support for business ventures and the financing of other items such as emergency medical bills, debt issues, vehicle repairs, household maintenance expenses, purchase of livestock, entrepreneurship, and educational tuition fees

Family Support. Donated a washing appliance to a family who was in need

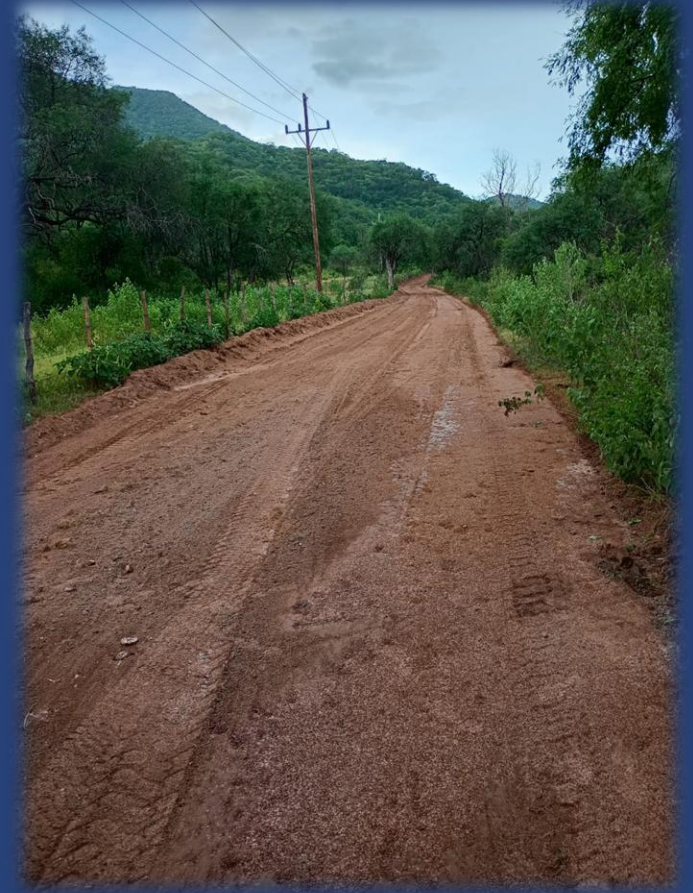
[Click for YouTube Video](#)



Community Infrastructure

Each year, access roads and related infrastructure and the environment within the project and communities are damaged due to the heavy rainy season

Roads, infrastructure and the environment are rehabilitated



Community Economic Diversification

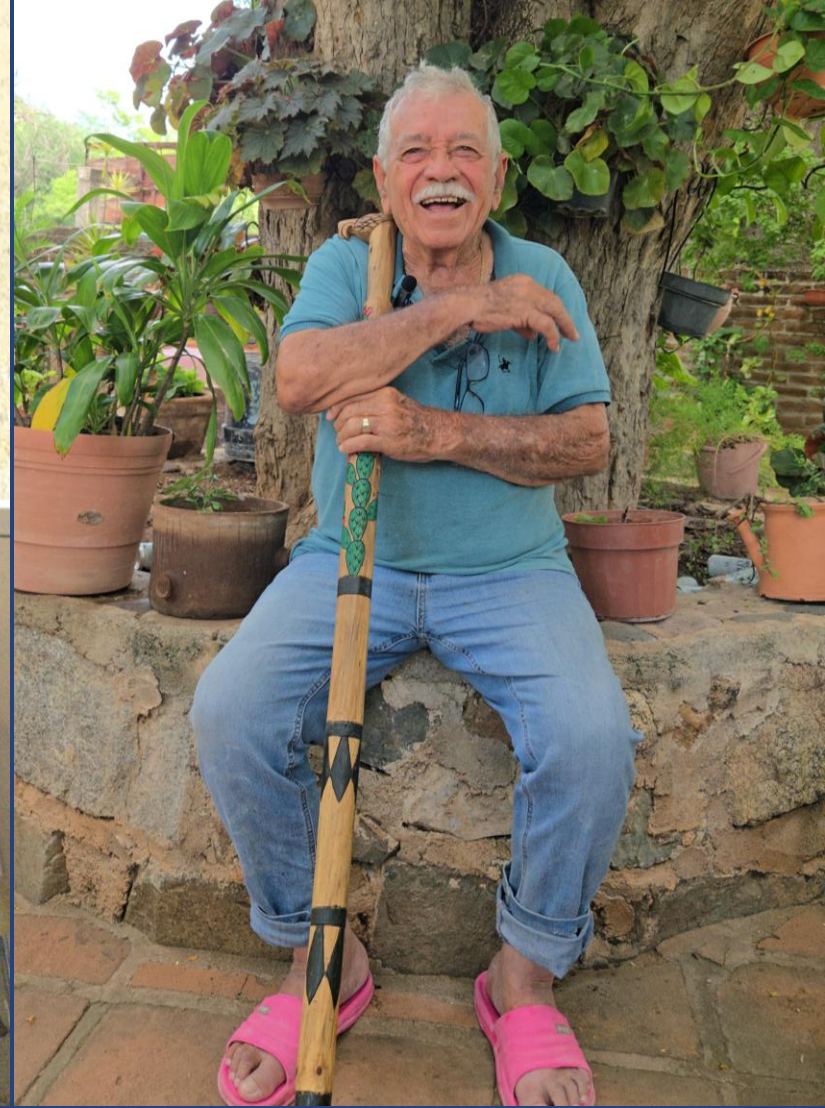
Minaurum continued with its Agave plantation program totaling 28,000 Augustiflora Agave plants and an increase from 3 hectares initially to 8 hectares, with 7,600 planted in 2024

First harvest planned for 2025

Funded and supported plant nursery

[Click for YouTube Video](#)





Governance

Stakeholder Engagement

No Stakeholder Left Behind

Stakeholders at all levels are consulted during exploration programs ensuring clear lines of communication and ongoing community involvement. Minaurum holds regular community meetings and information sessions

Minaurum assisted with topographic surveying and boundary marking of plots owned by community members for the preparation of possession certificates, easement agreements, registration of assembly minutes, support in reprinting agrarian rights, support in the regularization of rights, verification of the status of land and rights, expenses for assemblies, and verification of agrarian rights status with the National Agrarian Registry.



Continual Improvement – 2025 Onward

Environmental

- Continue to expand agave plantation/nursery
- Expand availability of water sources with additional water well drilling
- Continue with support for education, supplies and scholarships

Social

- Provide more employment opportunities at the agave plantation/nursery
- Invest in training and hiring of local labour including students
- Continue educational sponsorships and workshops/lectures
- Expand infrastructure development in relevant areas
- Rehabilitate and repair infrastructure
- Continue to support the elderly and community members who are immobile

Governance

- Continue stakeholder engagement with regular organized monthly meetings



Contact Us

www.minaurum.com

Phone: +1 778 330 0994

Email: info@minaurum.com



MINAURUM SILVER INC